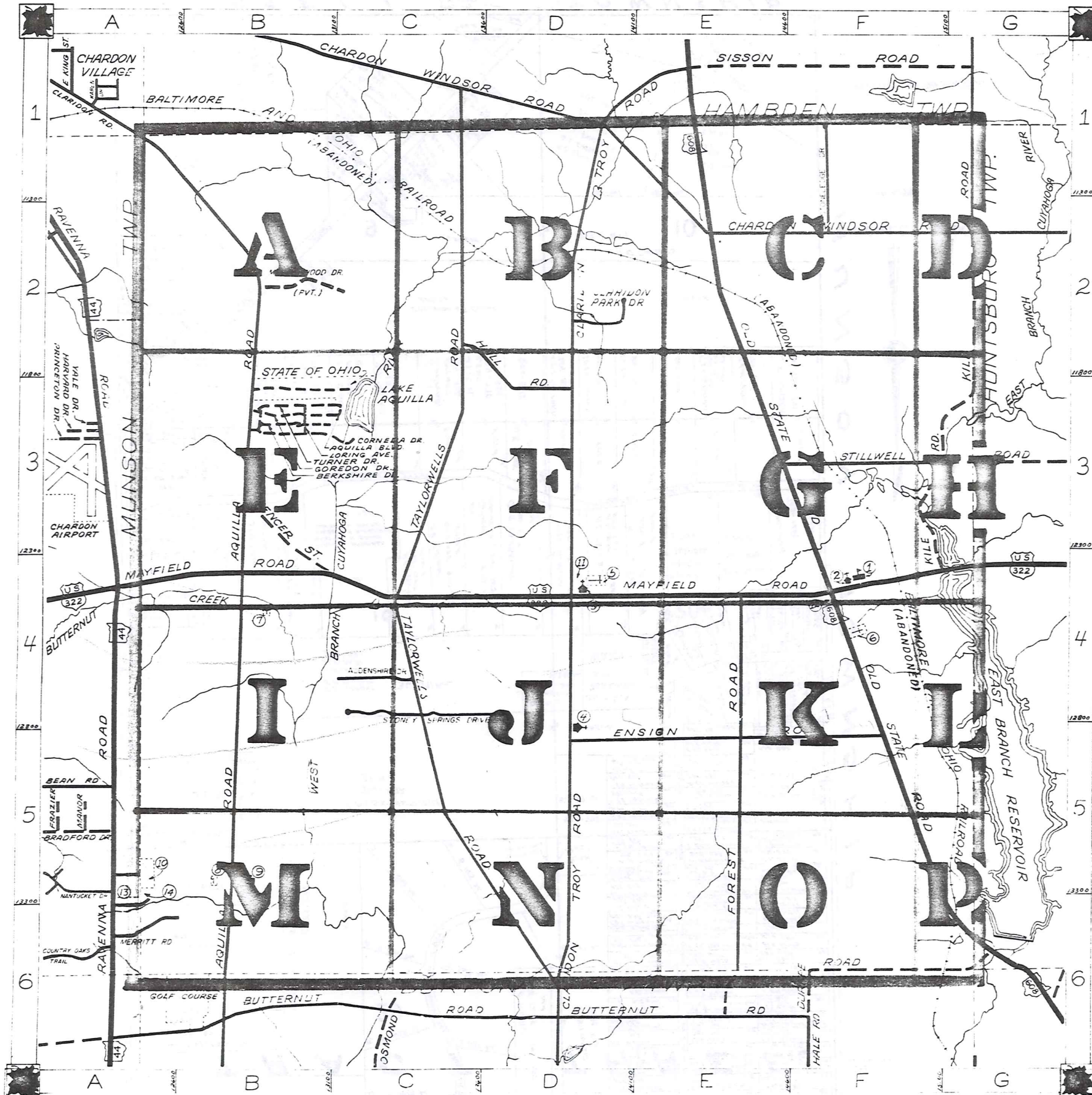


ROAD INDEX 196



A	ALDENSHIRE DR C4	I cont	S
	AQUILLA BLVD C3		SPENCER ST B3-B4
	AQUILLA RD A1-B6	J	STILLWELL RD F3-G3
			STONELEDGE DR F1-F2
			STONE SPRINGS DR C4
B	BERKSHIRE DR B3	K	T
		KILE RD F4-G1	TAYLORWELLS RD C1-D6
			TURNER DR. B3
C	CHARDON WINDSOR RD D1-G2	L	U
	CLARIDON PARK DR D2	LORING AVE B3	
	CLARIDON TROY RD D1-D6		
	CORNELIA DR B3		
D	DURKEE RD. F6-G6	M	V
		MAYFIELD RD A4-G4	
		MEADOWWOOD JH. B2	
		MEPRITT RD. A6	
E	ENSIGN RD D5-F5	N	W
F	FOREST RD. E4-E6	O	X
		OLD STATE RD. E1-G4	
G	GOREDON DR. B3	P	Y
H	HALL RD. C2-D3	Q	Z
I		R	

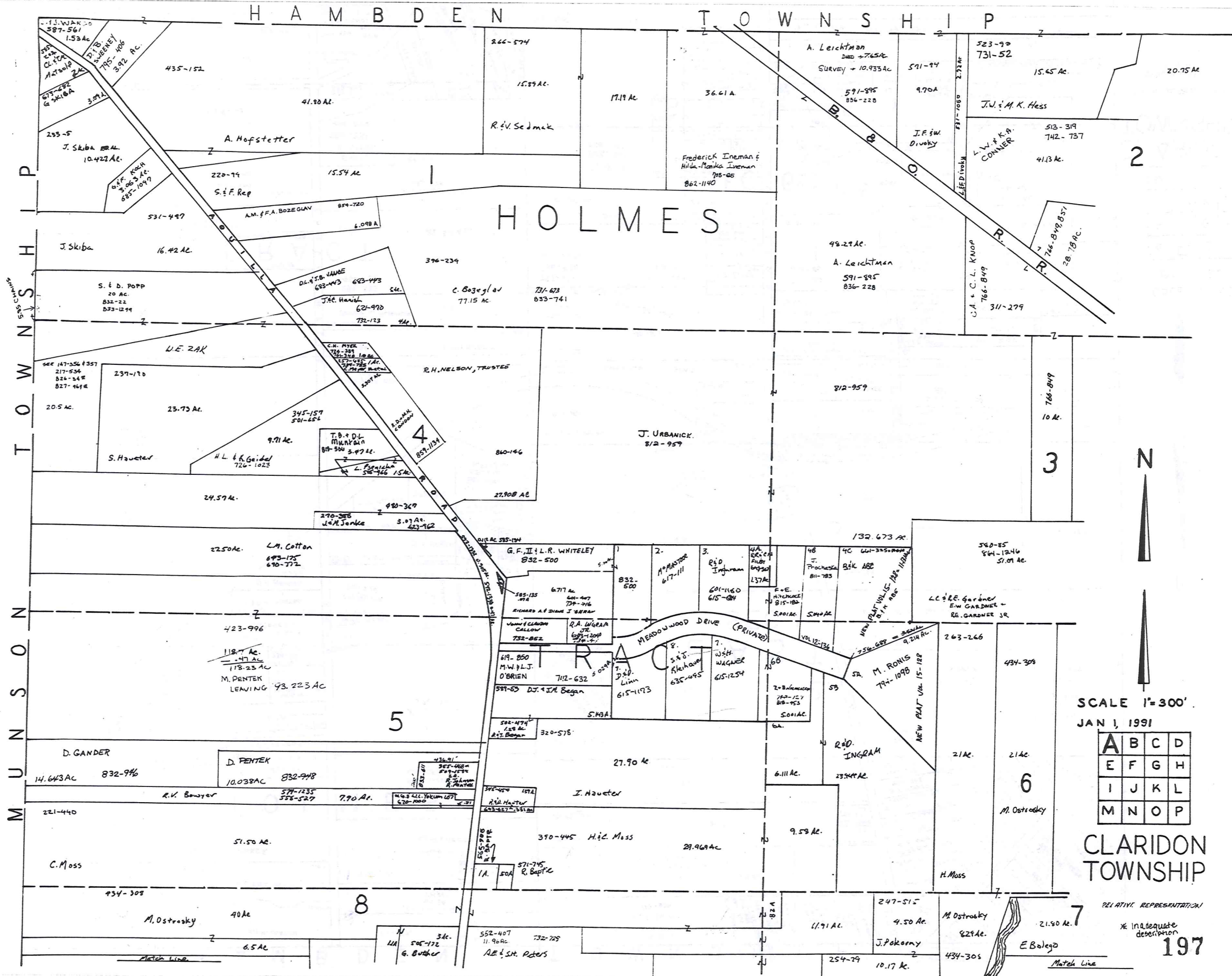
- 1 CLARIDON ELEMENTARY SCHOOL
- 2 EAST CLARIDON METHODIST CHURCH
- 3 THE FIRST CONGREGATIONAL CHURCH
- 4 CHRISTIAN MISSIONARY ALLIANCE CH.
- 5 CLARIDON CENTER CEMETERY
- 6 EAST CLARIDON CEMETERY
- 7 WEST CLARIDON CEMETERY
- 8 GEAUGA COUNTY HOME CEMETERY
- 9 PIPASANT HILL COUNTY HOME
- 10 GEAUGA COUNTY COMM. HOSPITAL
- 11 CLARIDON TOWN HALL
- 12 U.S. POST OFFICE (CLARIDON)
- 13 GEAUGA COUNTY SAFETY CENTER
- 14 GEAUGA COUNTY WELFARE DEPT.

CLARIDON TOWNSHIP

SCALE 1"=2000'

UNPAVED ROAD RAILROAD
PAVED ROAD TOWNSHIP LINE

GEAUGA COUNTY ENGINEER



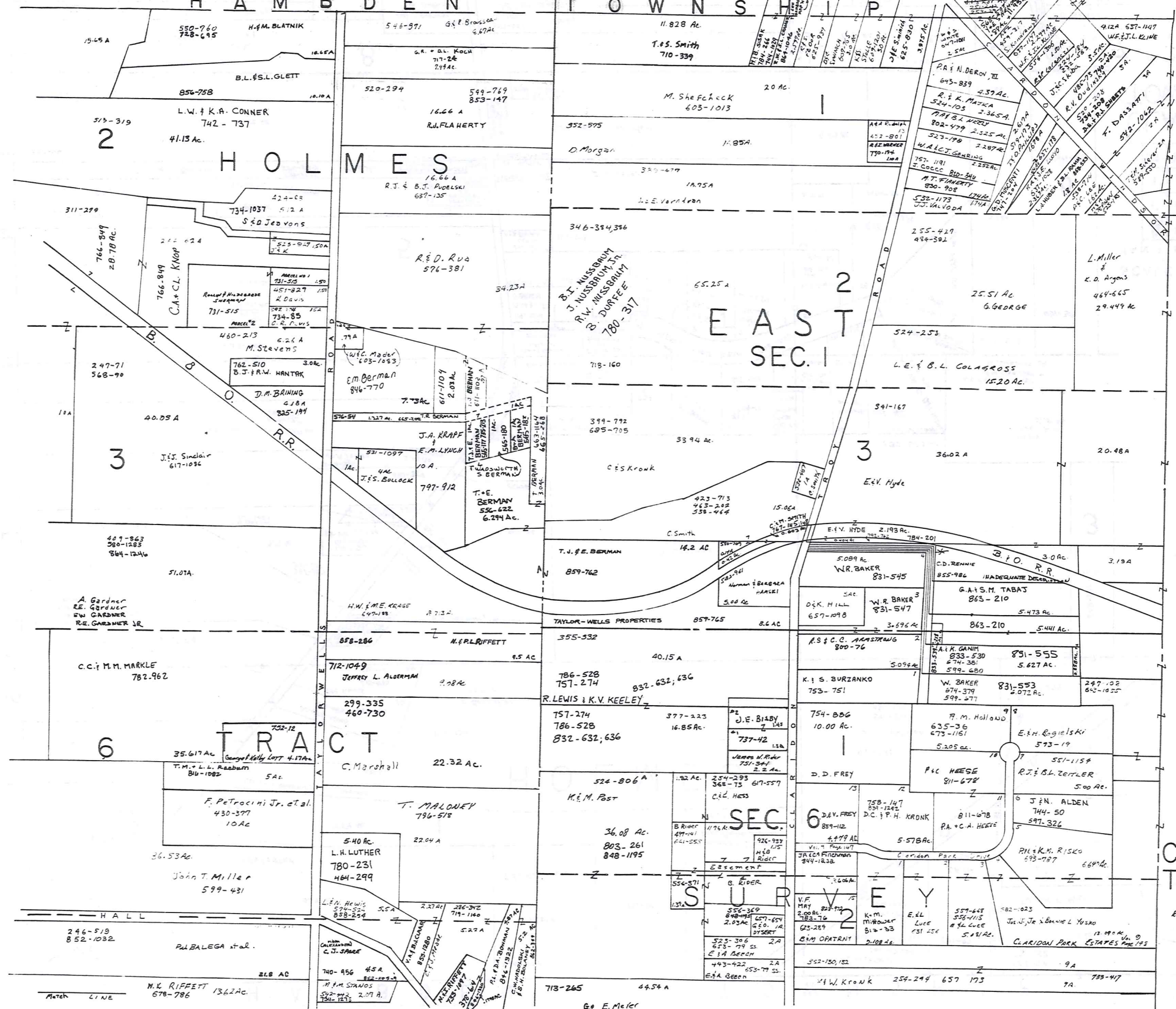
SCALE 1"=300'
JAN 1, 1991

A	B	C	D
E	F	G	H
I	J	K	L
M	N	O	P

CLARIDON TOWNSHIP

RELATIVE REPRESENTATION
X Inadequate description
197

H A M B D E N T O W N S H I P

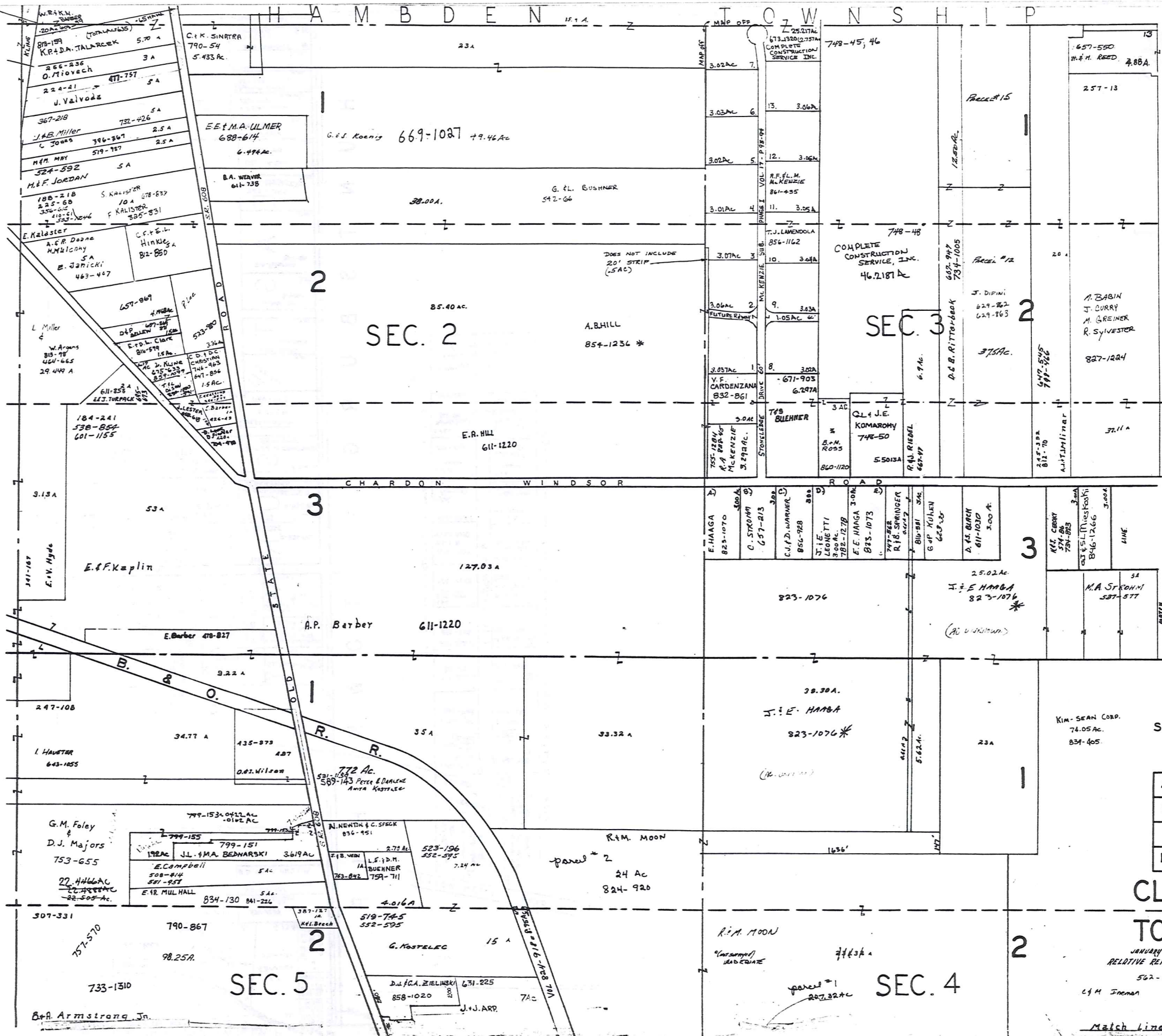


SCALE 1"=300'
JAN 1, 1991

A	B	C	D
E	F	G	H
I	J	K	L
M	N	O	P

CLARIDON TOWNSHIP

RELATIVE REPRESENTATION
* Inadequate description

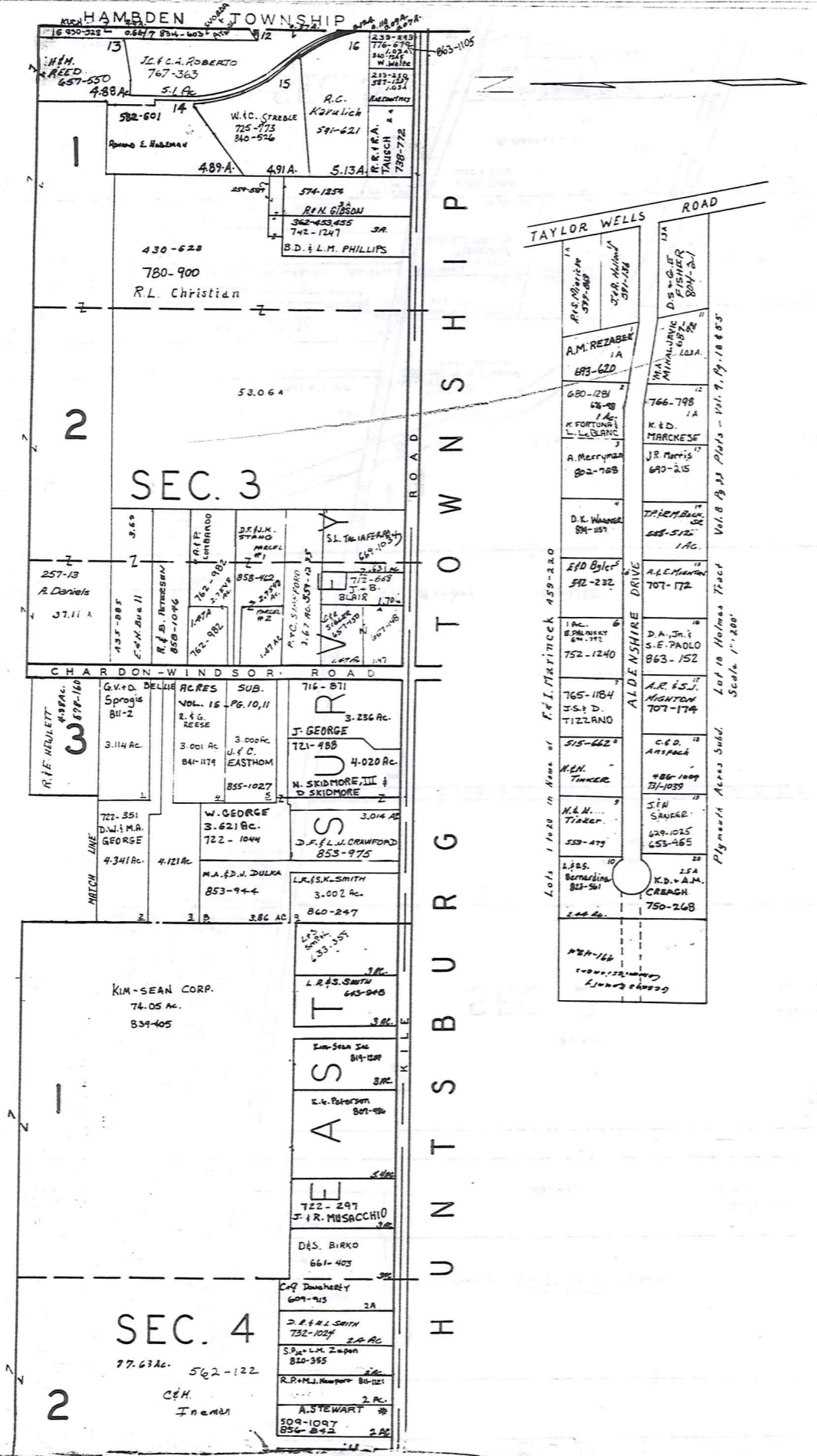


SCALE 1" = 300'

A	B	C	D
E	F	G	H
I	J	K	L
M	N	O	P

**CLARIDON
TOWNSHIP**

JANUARY 1, 1891
RELATIVE REPRESENTATION
562-127
C. M. Freeman * Inadequate
description
Match Line



SCALE 1"=300'

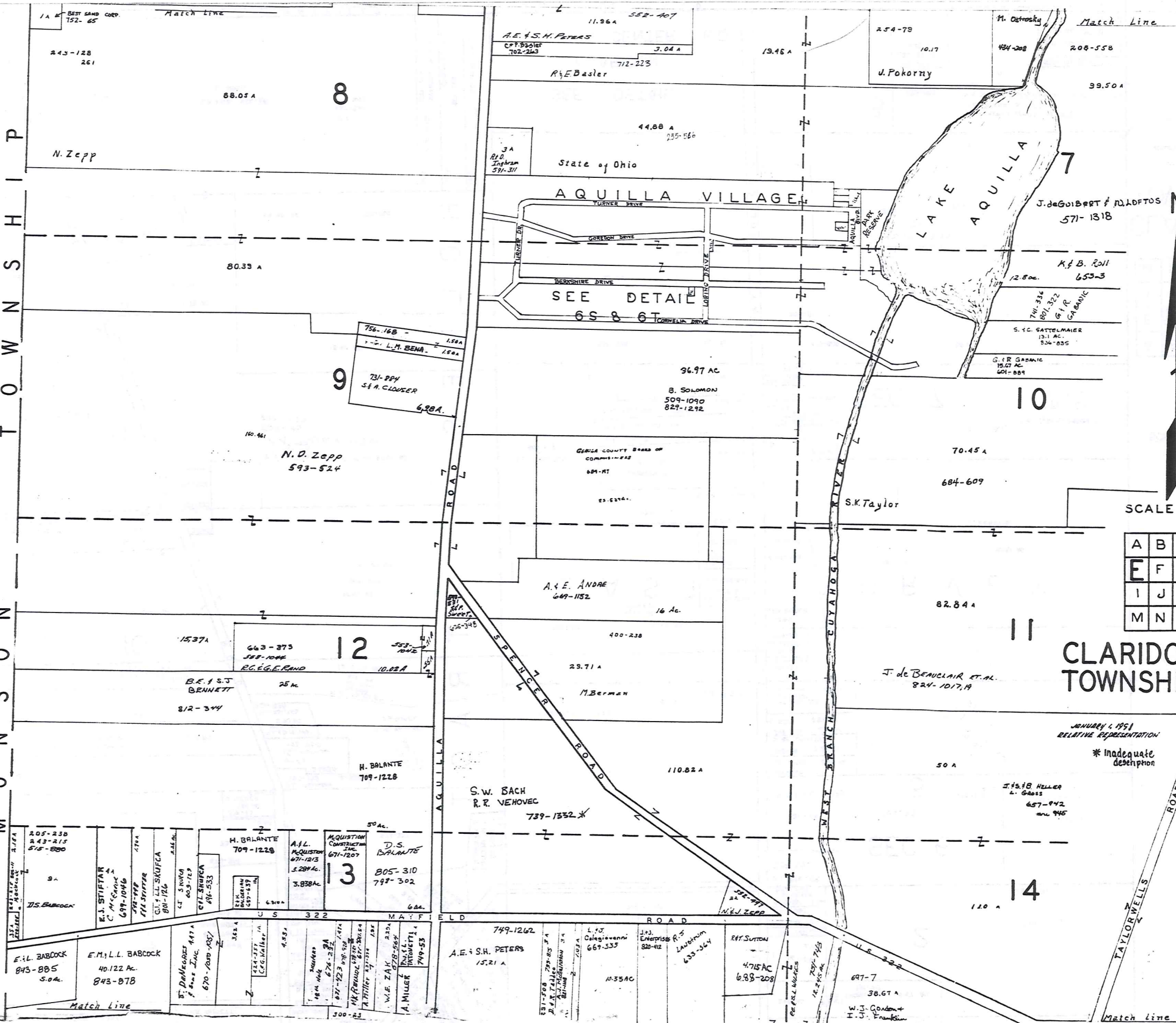
* Inadequate description

JANUARY 1, 1991
RELATIVE REPRESENTATION

A	B	C	D
E	F	G	H
I	J	K	L
M	N	O	P

CLARIDON TOWNSHIP

T O W N S H I P
M U N I C I P A L



A	B	C	D
E	F	G	H
I	J	K	L
M	N	O	P

CLARIDON TOWNSHIP

JANUARY 1, 1951
RELATIVE REPRESENTATION
* Inadequate description



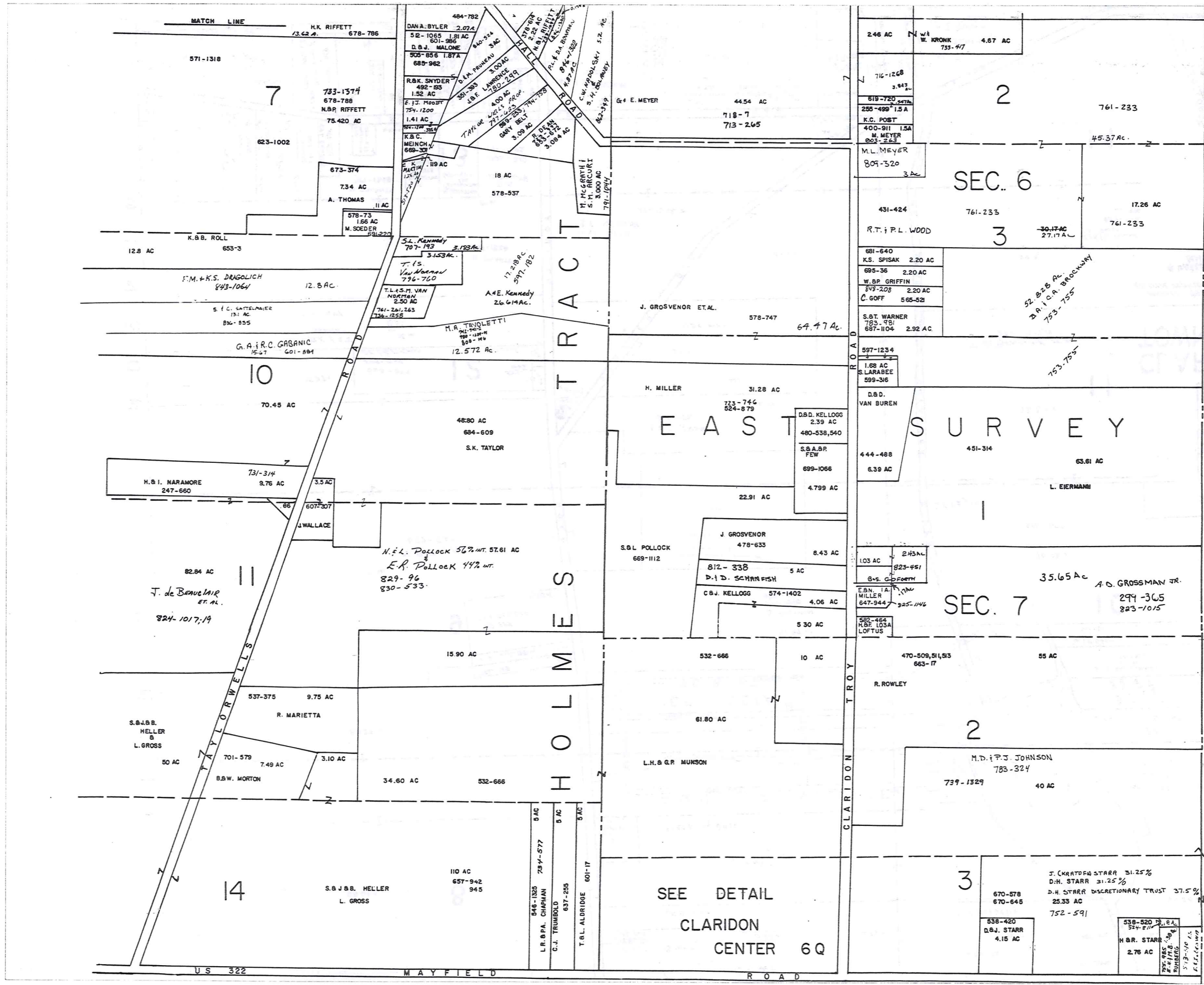
SCALE: 1" = 300'

A	B	C	D
E	F	G	H
I	J	K	L
M	N	O	P

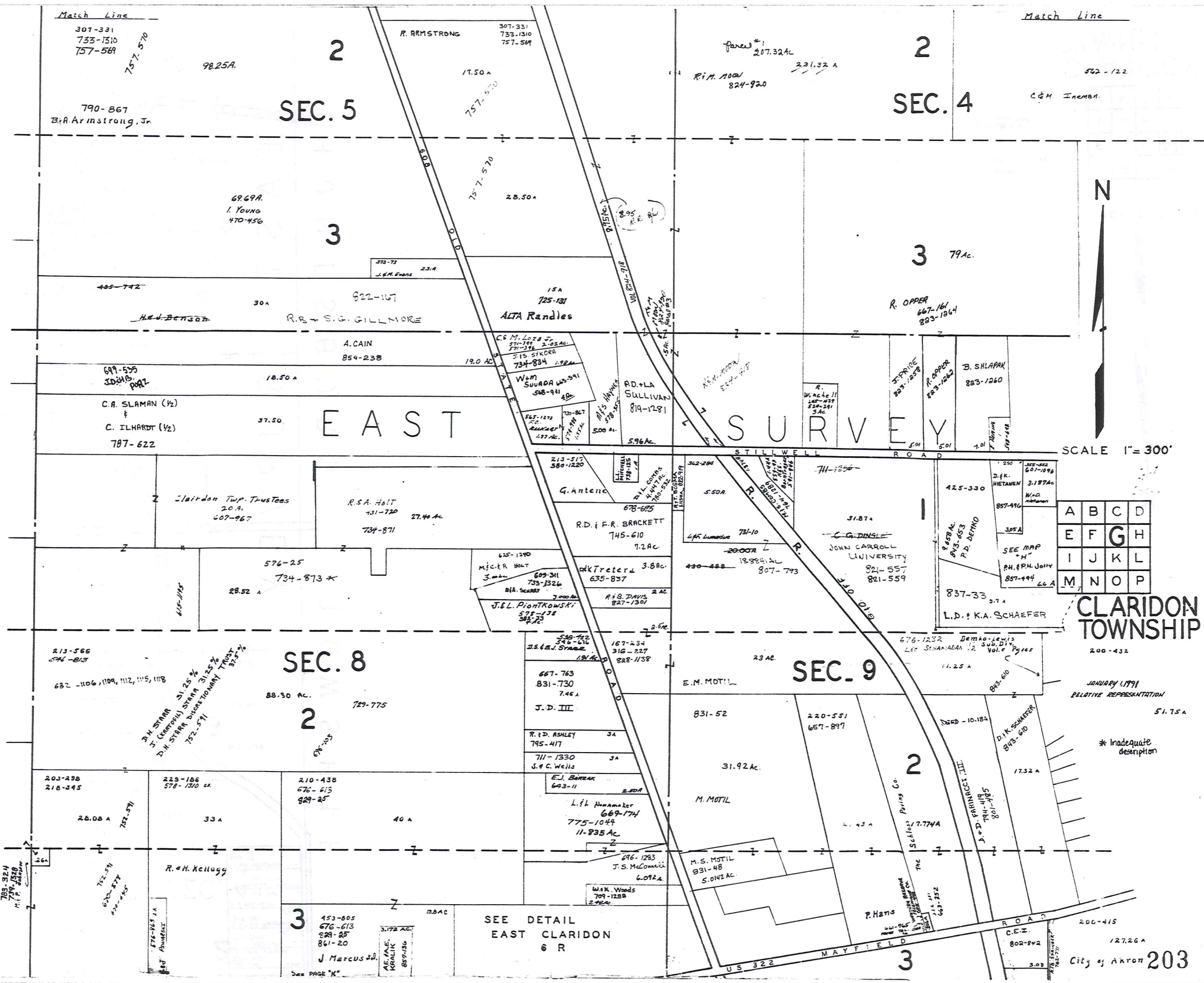
CLARIDON TOWNSHIP

JANUARY 1, 1991
RELATIVE REPRESENTATION

* Inadequate description



SEE DETAIL
CLARIDON
CENTER 6Q



Match Line
307-331
733-1310
757-589
757-570
98.25A
790-867
B.A. Armstrong, Jr.

Match Line
522-122
C & H. Ineman

SEC. 5

SEC. 4

3

3 79Ac.

EAST

SURVEY

SCALE 1" = 300'

A	B	C	D
E	F	G	H
I	J	K	L
M	N	O	P

CLARIDON TOWNSHIP

SEC. 8

SEC. 9

2

2

SEE DETAIL
EAST CLARIDON
6 R

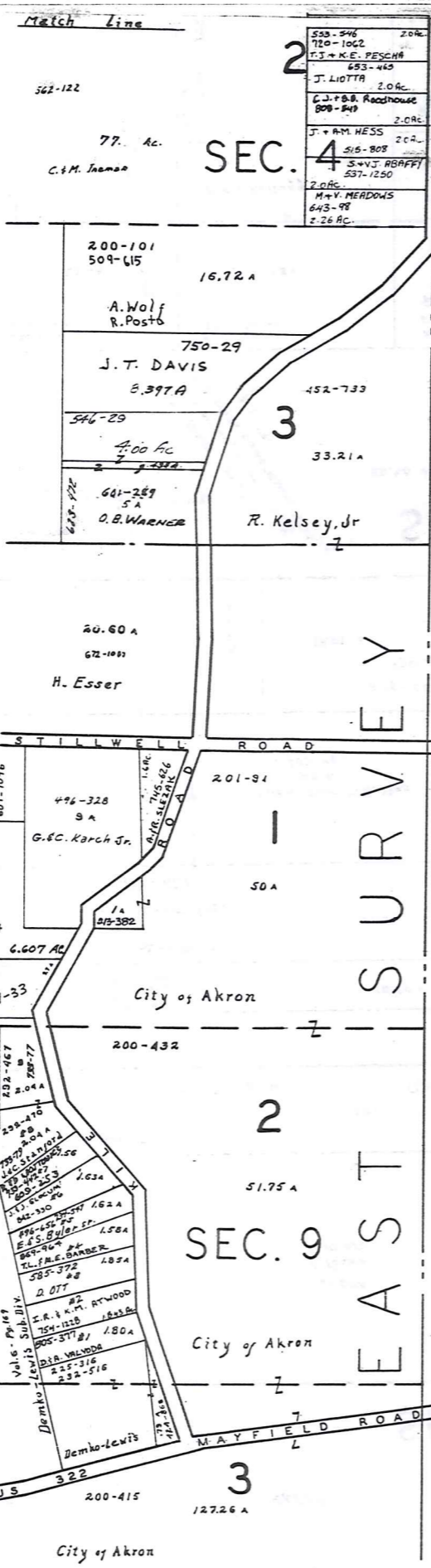
JANUARY 1, 1971
RELATIVE REPRESENTATION

* Inadequate description

City of Akron 203

789-324
739-1528
M.P. Adams

See PAGE "K"



EAST SURVEY TOWNSHIP OF CLARIDON



SCALE 1"=300'

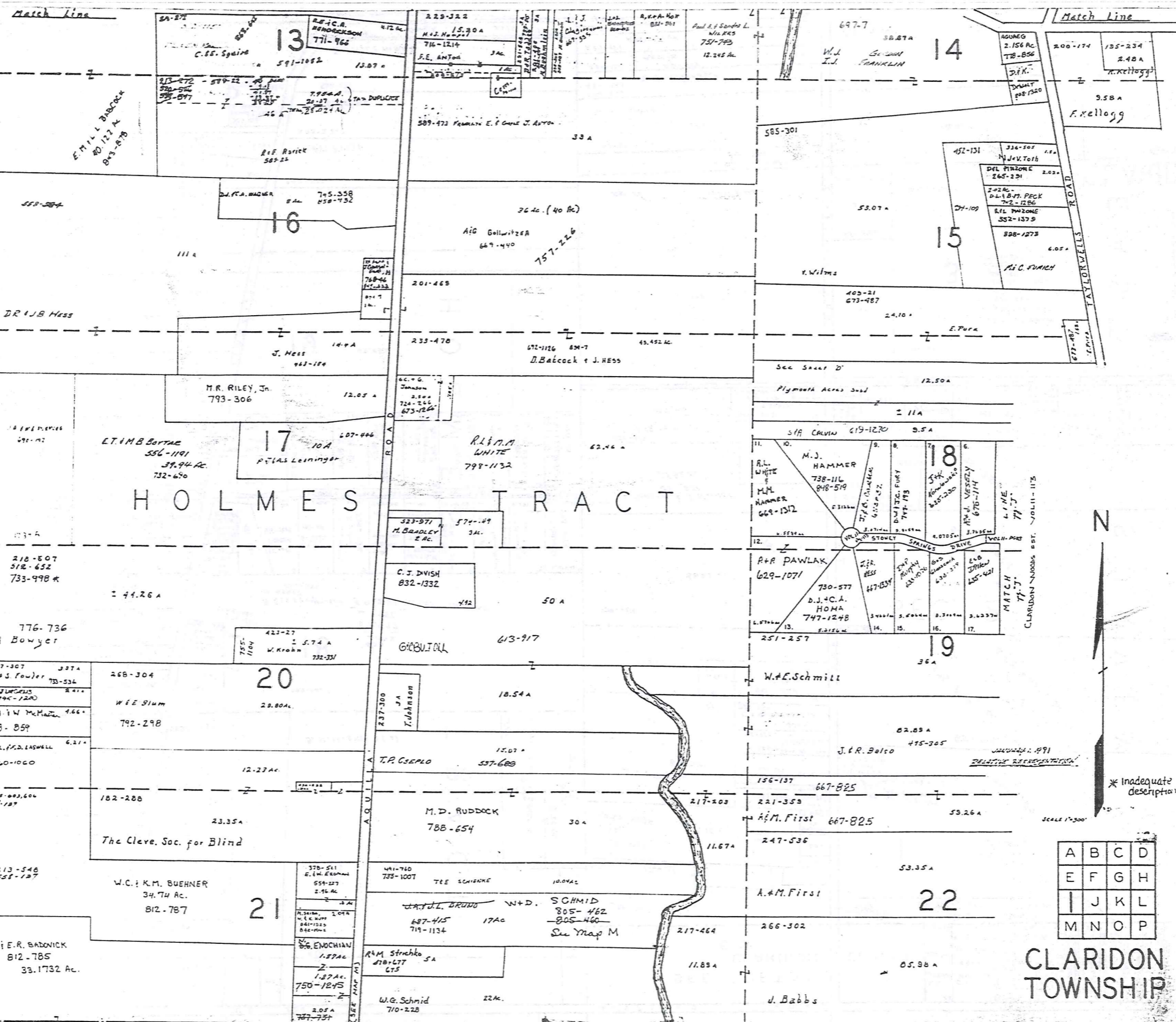
JANUARY 1, 1998
RELATIVE REPRESENTATION

* Inadequate description

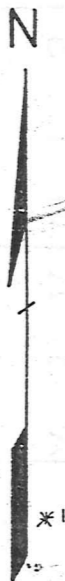
A	B	C	D
E	F	G	H
I	J	K	L
M	N	O	P

CLARIDON TOWNSHIP

MUNICIPALITY OF CLARIDON



HOLMES TRACT

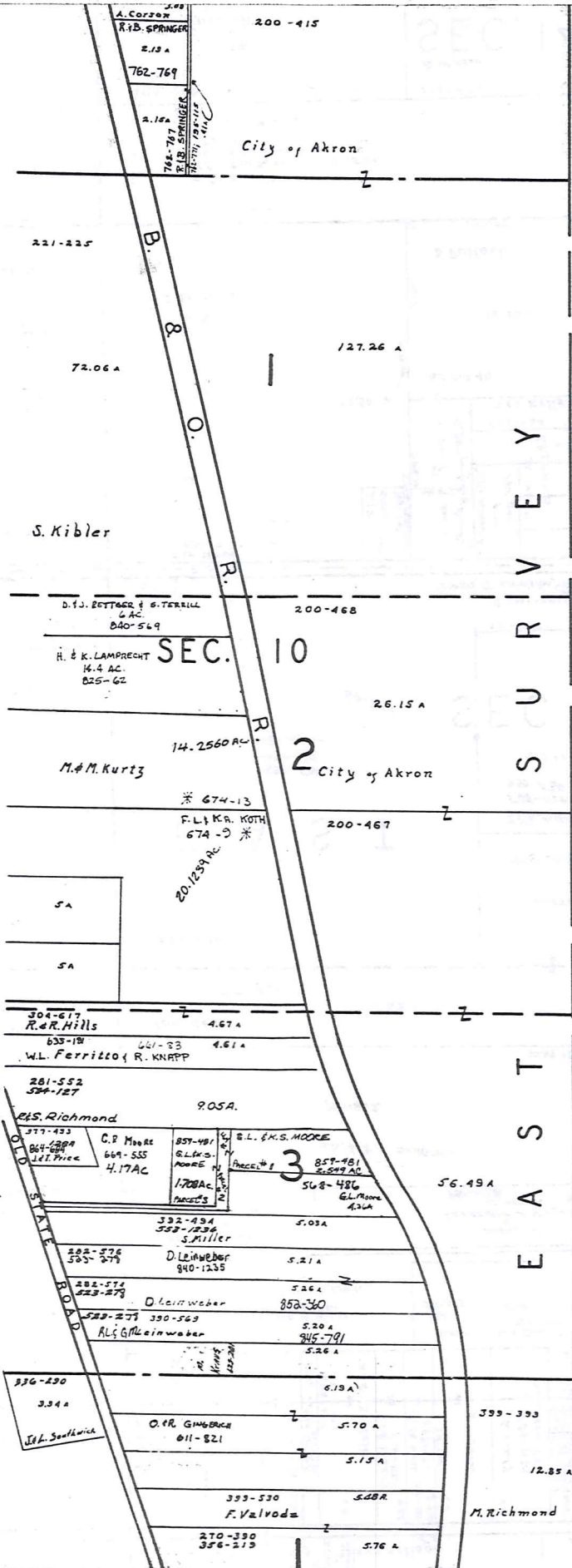


* Inadequate description

SCALE 1"=300'

A	B	C	D
E	F	G	H
I	J	K	L
M	N	O	P

CLARIDON TOWNSHIP



H U N T S B U R G T O W N S H I P

E A S T S U R V E Y



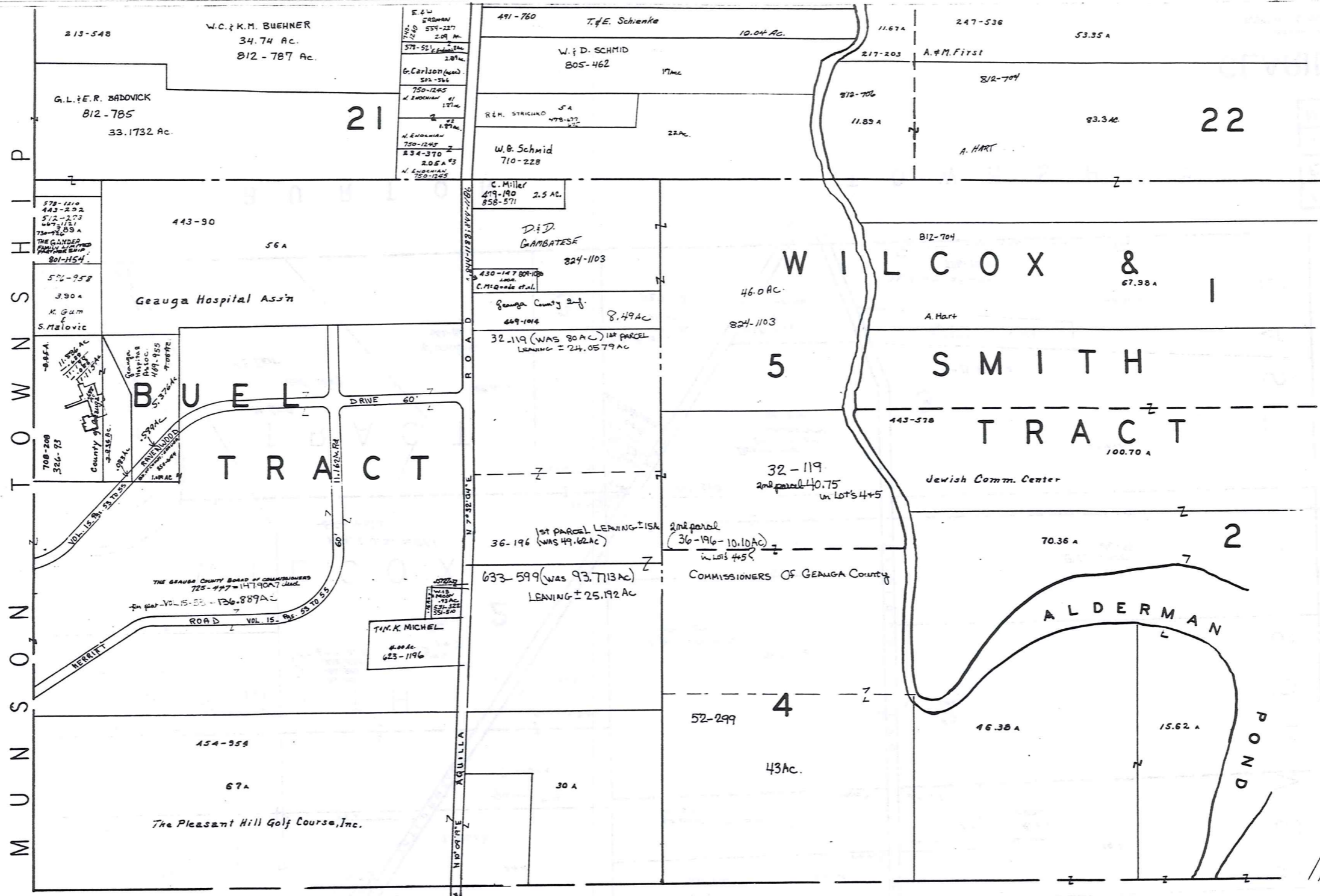
* Inadequate description

SCALE 1" = 300'

JANUARY 1, 1991
RELATIVE REPRESENTATION

A	B	C	D
E	F	G	H
I	J	K	L
M	N	O	P

CLARIDON TWP.



BURTON TOWNSHIP

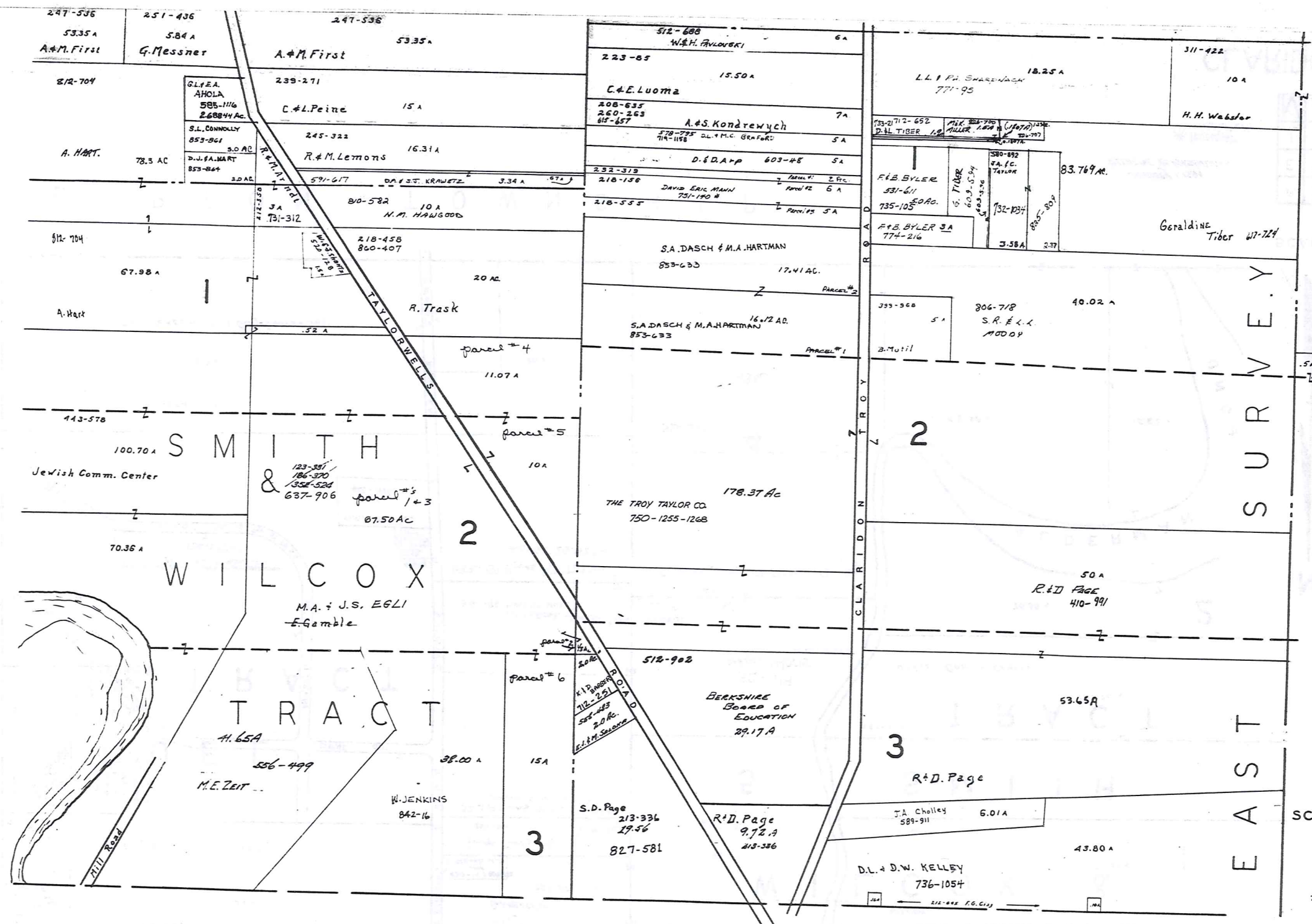
SCALE 1" = 300'

JANUARY 1, 1991
RELATIVE REPRESENTATION

* Inadequate description

A	B	C	D
E	F	G	H
I	J	K	L
M	N	O	P

CLARIDON TWP
209



EAST SURVEY



SCALE 1" = 300'

* Inadequate description

BURTON TOWNSHIP

A	B	C	D
E	F	G	H
I	J	K	L
M	N	O	P

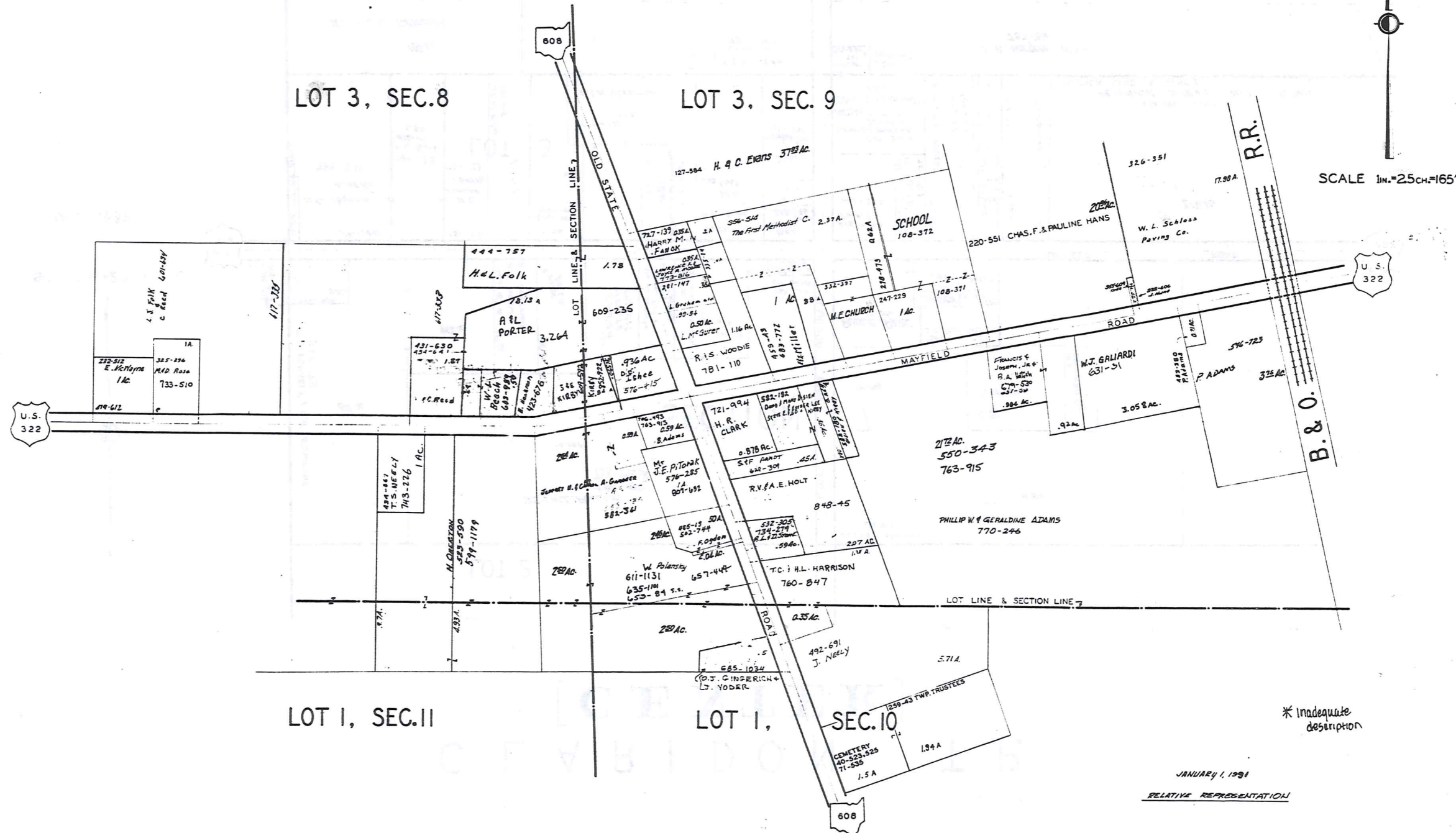
CLARIDON TWP.

JANUARY 1, 1991
RELATIVE REPRESENTATION

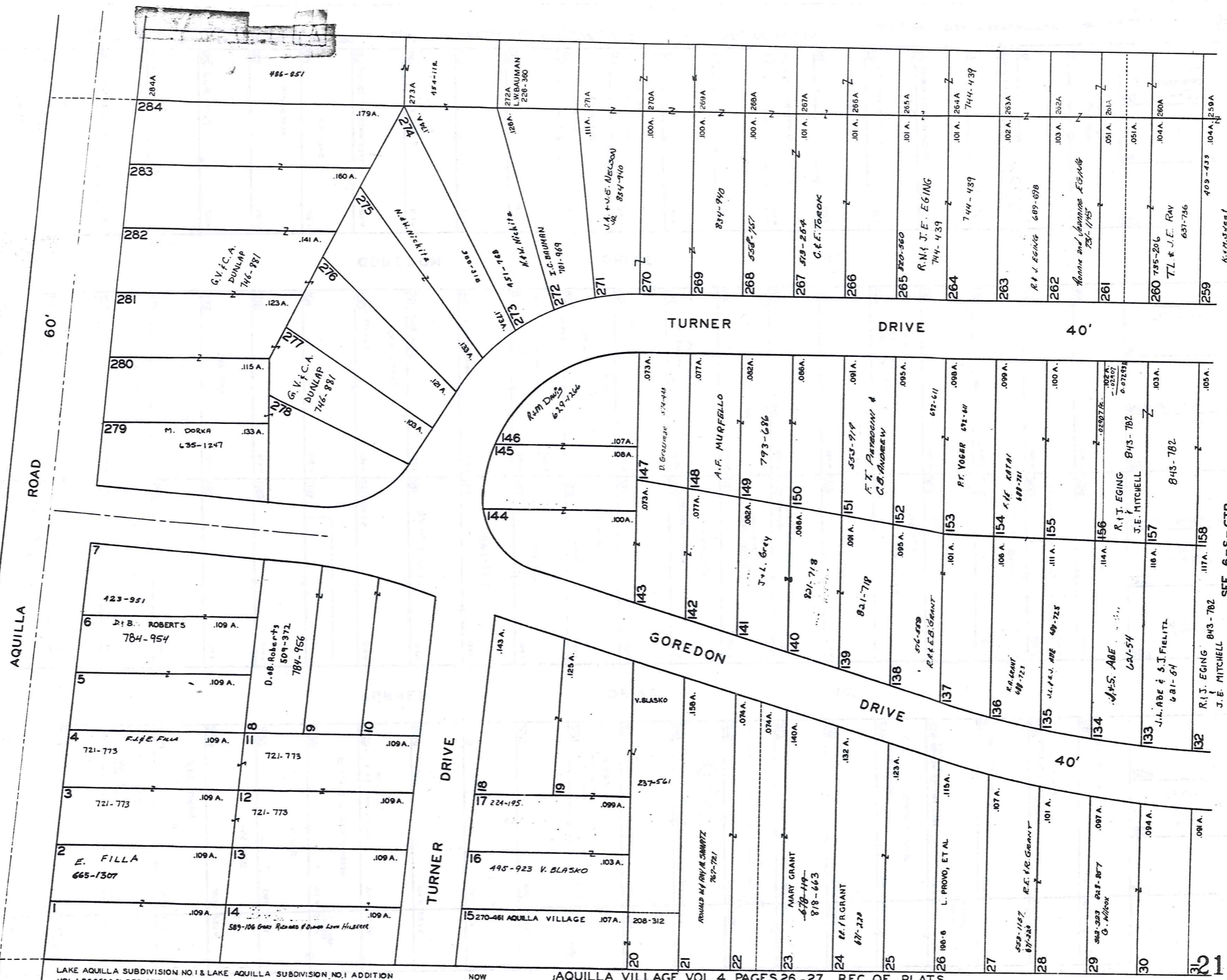
EAST CLARIDON
AND VICINITY

CLARIDON TP.

EAST CLARIDON
AND VICINITY



SCALE 1IN.=30FT.



LAKE AQUILLA SUBDIVISION NO. 1 & LAKE AQUILLA SUBDIVISION NO. 1 ADDITION
 VOL. 1 PGS 503, 51 REC. OF PLATS VOL. 4 PGS 23 & 24 REC. OF PLATS

NOW LAKE AQUILLA VILLAGE VOL. 4 PAGES 26-27 REC. OF PLATS

JANUARY 1, 1991 RELATIVE REPRESENTATION

* Inadequate description

6-S WEST

SEE 6-S-CTR.

SCALE 1"=30 FT.

57	703-803	J. Pierce	.110 A.
58	593-13	E.E. Cormier	.108 A.
59	551-726	E.E. CORMIER	.104 A.
60	179-381	J.B.A.L. CHAPARD	.103 A.
61	524-79	E.E. CORMIER	.103 A.
62	524-642		.103 A.
63		G.A. Davis	.103 A.
64	484-743		.103 A.
65	105-482	J.J. ZEMAL ETAL	.103 A.
66		D.E. LEICH 717-1047	.103 A.
67			.103 A.
68			.103 A.
69	653-174	CIS GARDNER	.103 A.
70		R. DEZSOU 635-686	.102 A.
71			.102 A.
72			.102 A.
73		THE FIRST HUNGARIAN REFORMED CHURCH	.102 A.
74			.102 A.
75	495-925	V. Blaska	.102 A.
76	102-600	H.G. & H.M. HECKER	.102 A.
77		469-242 1/2 INT 631-1104 L. Shea & F.R. #R Baumgartner	.102 A.
78			.102 A.
79	631-1031	J.M. BRIGGS	.102 A.
80		D.A. LOFTUS J.L. DeGUIBERT 571-1318	.092 A.
81			.092 A.
82			.093 A.

108			.101 A.
107	771-371	G. GRECHHE	.103 A.
106		E. BEIRYS 763-1051	.104 A.
105			.104 A.
104		763-1051	.104 A.
103		762-644	.104 A.
102			.104 A.
101			.104 A.
100	410-99	F.E.M. MATRICE	.104 A.
99	308-189		.104 A.
98	224-284	SIVARCO	.104 A.
97			.092 A.
96		American Heating Truss & IR 819-684	.104 A.
95			.104 A.
94		A. & H. BUTTON 841-1235	.104 A.
93		S.J. Smith 573-144	.104 A.
92			.104 A.
91			.104 A.
90		G. OYARDS 674-857 731-181 759-1058	.104 A.
89			.104 A.
88			.104 A.
87		J & E RIDER	.092 A.
86			.104 A.
85			.092 A.
84	233-249	L. ZINNER	.092 A.
83		J & E RIDER 538-1118	.115 A.
82			.105 A.

233		D.S. WING 748-246	.107 A.
232		452-176 G. Cahill	.107 A.
231		762-849	.108 A.
230		418-480 598-1120 E.A. Soika	.108 A.
229		683-400 RER BROOS	.108 A.
228			.105 A.
227		749-912	.105 A.
226		749-912	.105 A.
225		F. J. & S.M. STROMMEIER F. J.S. STROMMEIER 653-769	.105 A.
224		239-87	.104 A.
223			.104 A.
222			.104 A.
221		423-1037 374-296 R. SHARP	.104 A.
220			.103 A.
219			.103 A.
218			.051 A.
217			.103 A.
216			.102 A.
215		635-1050 C.H. HENDEKAS, JR.	.102 A.
214		105-394 J.H. TRAVERSE JR. 471-674	.102 A.
213		288-1011 L. TARRANTING 574-419 C. Handley, Jr.	.101 A.
212		251-241 S.B.J. CENTA 733-802	.101 A.
211		245-508 S.B.J. CENTA	.101 A.
210			.093 A.
209		C.L. MANNING 782-1140	.092 A.
208			.103 A.

SEE 6-S-CTR.

LAKE AQUILLA SUBDIVISION NO. 1 & LAKE AQUILLA SUBDIVISION NO. 1 ADDITION VOL. 1 PGS 50 & 51 REC OF PLATS

NOW

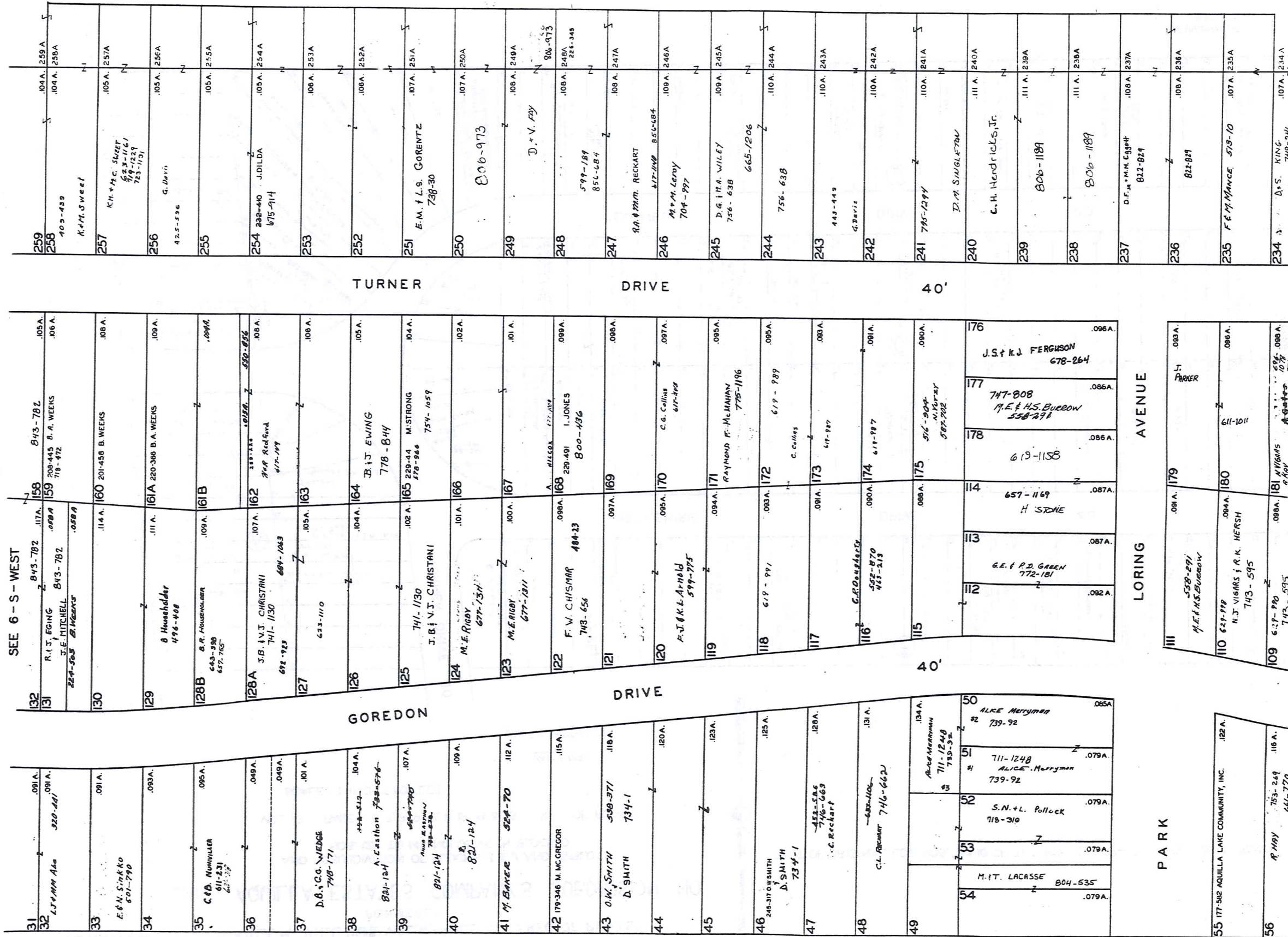
AQUILLA VILLAGE VOL. 4 PAGES 26-27 REC. OF PLATS

JAN 6, 1991 RELATIVE REPRESENTATION

* Inadequate description

6-S EAST

SCALE 1"=30 FT.



LAKE AQUILLA SUBDIVISION NO 1 & LAKE AQUILLA SUBDIVISION NO 1 ADDITION
VOL. 4 PGS 50 & 51 REC OF PLATS

NOW AQUILLA VILLAGE VOL 4 PAGES 26-27 REC. OF PLATS
JAN 1, 1991 RELATIVE REPRESENTATION

* Inadequate description

6-S-CTR. 217

AQUILLA VILLAGE VOL. 4, PAGES 26-27 REC. OF PLATS
FORMERLY
LAKE AQUILLA ESTATES COMPANY'S SUBDIVISION NO. 1

AND RESUBDIVISION OF BLOCKS I & J AND SUBLOTS
NOS. 125 TO 141 INCLUSIVE IN BLOCK D

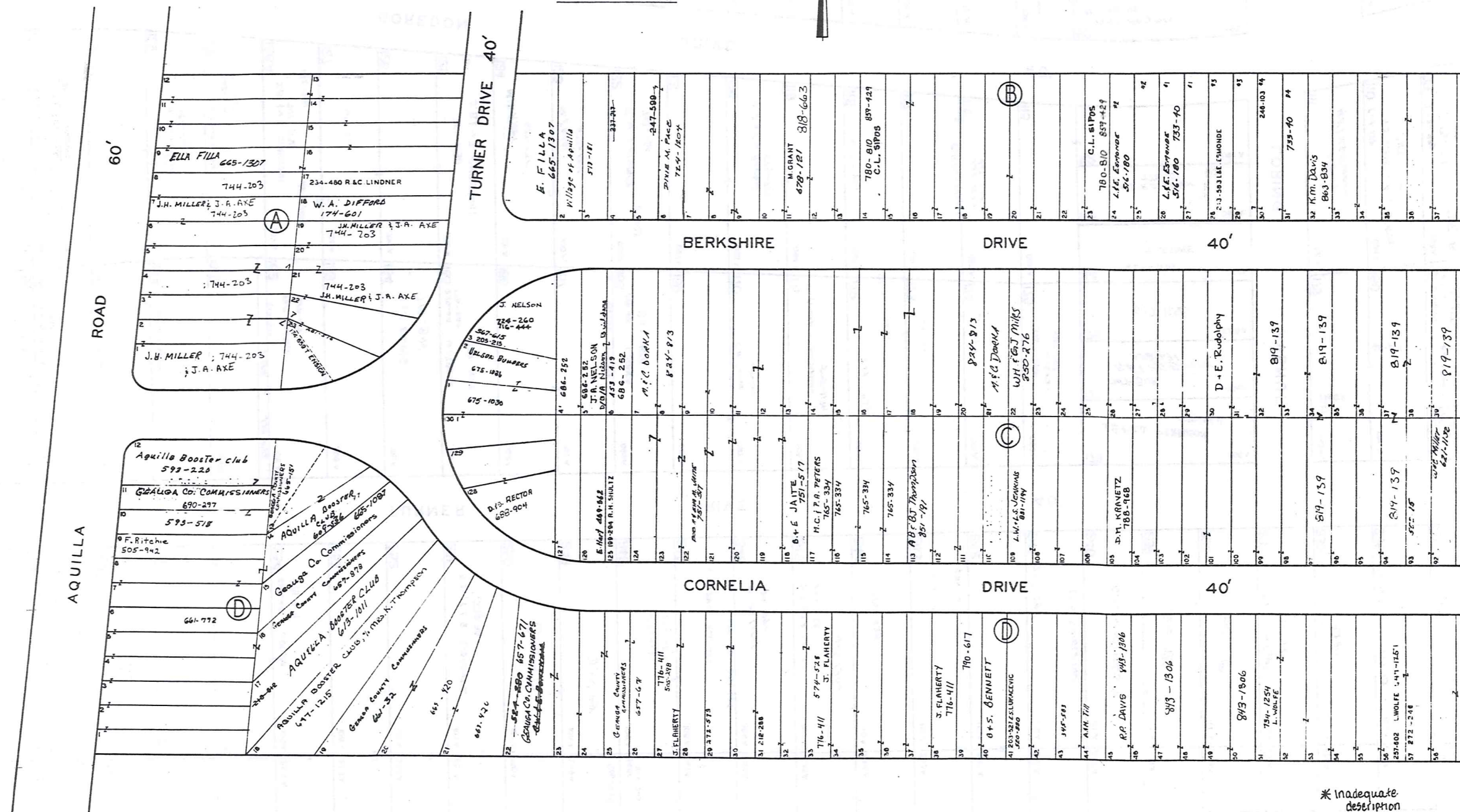
VOL. 2 PAGES 6, 7, 8, 9, 10, 11, 12, 19 & 33 REC. OF PLATS

SCALE 1 INCH = 40 FEET

PART OF ORIGINAL LOT NOS. 9 & 10 OF THE HOLMES TRACT CLARDON TOWNSHIP

JAN. 1, 1991

RELATIVE REPRESENTATION



SEE 6-T-2

* Inadequate description

AQUILLA VILLAGE VOL. 4, PAGES 26-27 REC. OF PLATS
FORMERLY
LAKE AQUILLA ESTATES COMPANY'S SUBDIVISION NO. 1

AND RESUBDIVISION OF BLOCKS I & J AND SUBLOTS
NOS. 125 TO 141 INCLUSIVE IN BLOCK D

PART OF ORIGINAL LOT NOS. 9 & 10 OF THE HOLMES TRACT CLARIDON TOWNSHIP

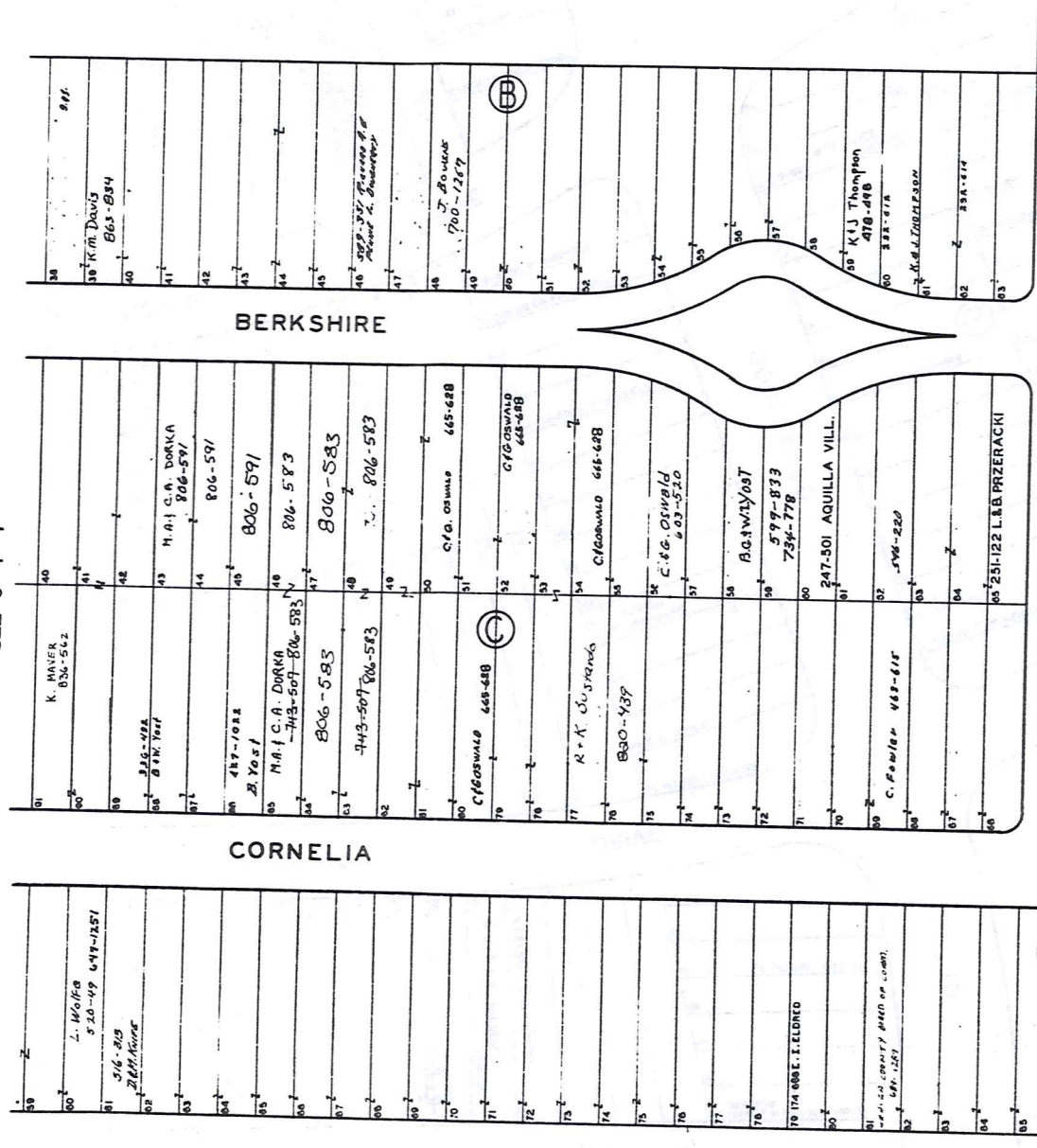
VOL. 2 PAGES 6, 7, 8, 9, 10, 11, 12, 19 & 33 REC. OF PLATS

SCALE 1 INCH = 40 FEET

JAN. 1, 1991
RELATIVE REPRESENTATION

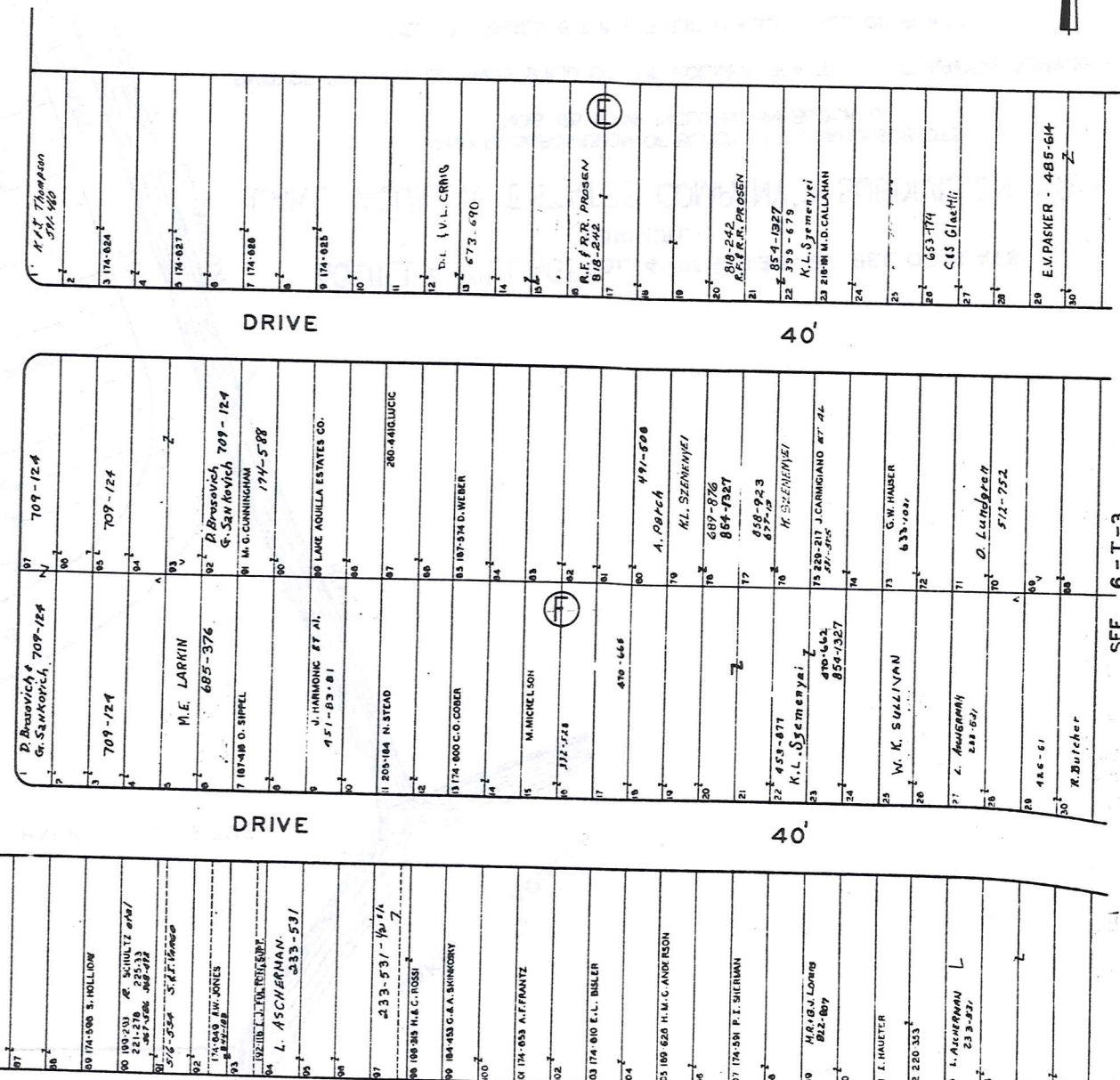


SEE 6-T-1



LORING AVENUE

40'

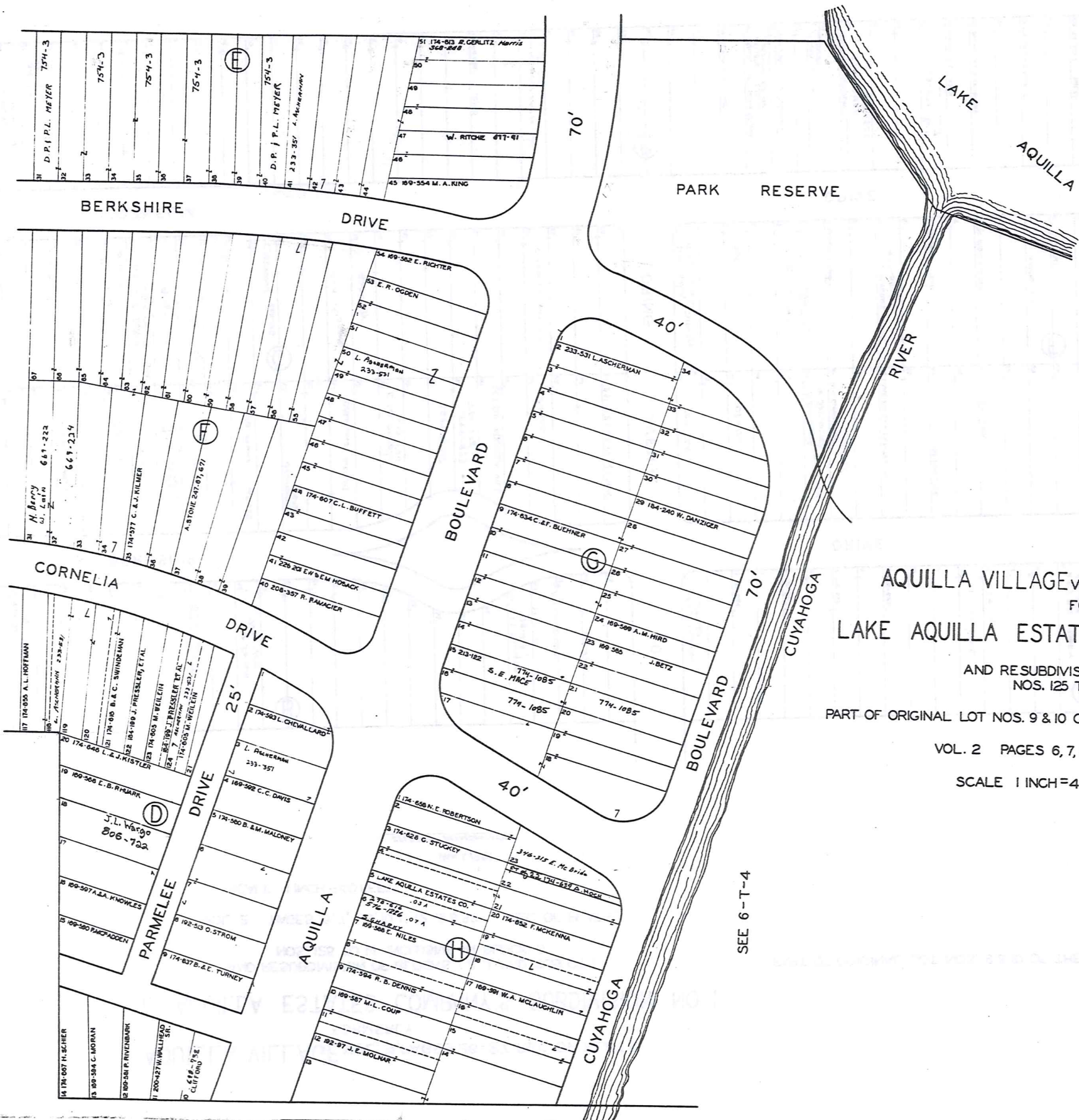


SEE 6-T-3

* inadequate description

SEE 6-T-2

SEE 6-T-4



AQUILLA VILLAGE VOL. 4 PAGES 26-27 REC. OF PLATS
 FORMERLY
 LAKE AQUILLA ESTATES COMPANY'S SUBDIVISION NO. 1
 AND RESUBDIVISION OF BLOCKS I & J AND SUBLOTS
 NOS. 125 TO 141 INCLUSIVE IN BLOCK D
 PART OF ORIGINAL LOT NOS. 9 & 10 OF THE HOLMES TRACT CLARIDON TOWNSHIP
 VOL. 2 PAGES 6, 7, 8, 9, 10, 11, 12, 19 & 33 REC. OF PLATS
 SCALE 1 INCH = 40 FEET



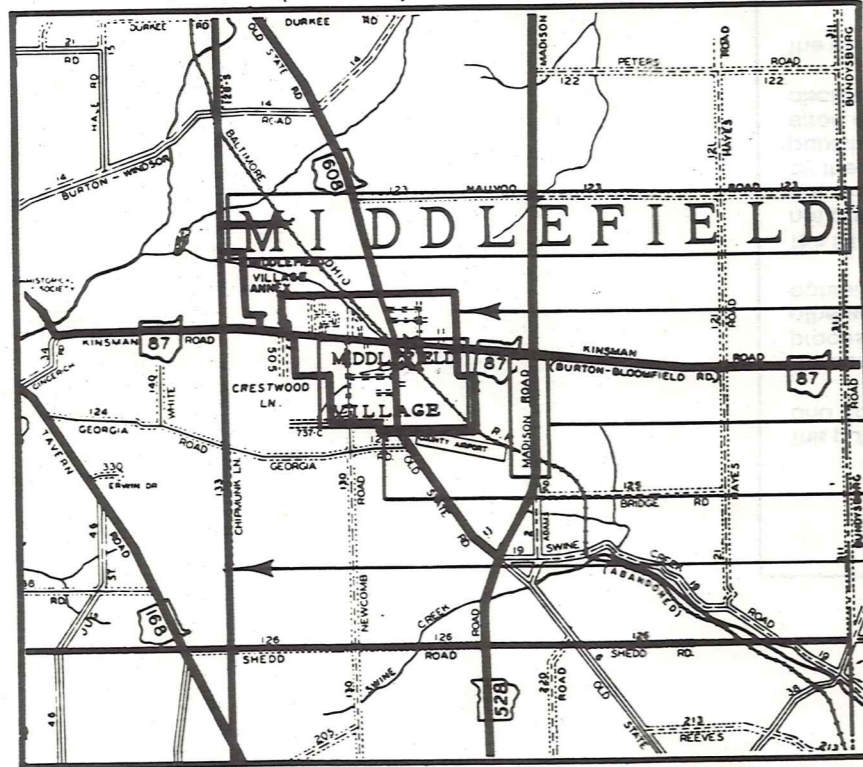
JAN 1, 1991
 RELATIVE REPRESENTATION

* Inadequate description

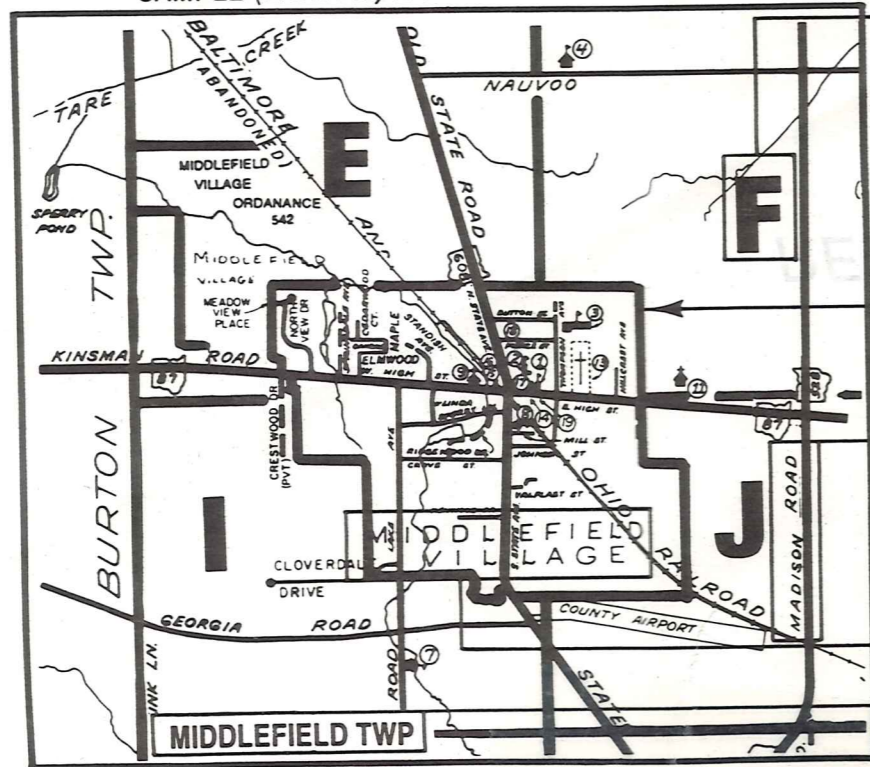
Explanation and Use Sheet for Geauga County, Ohio

A

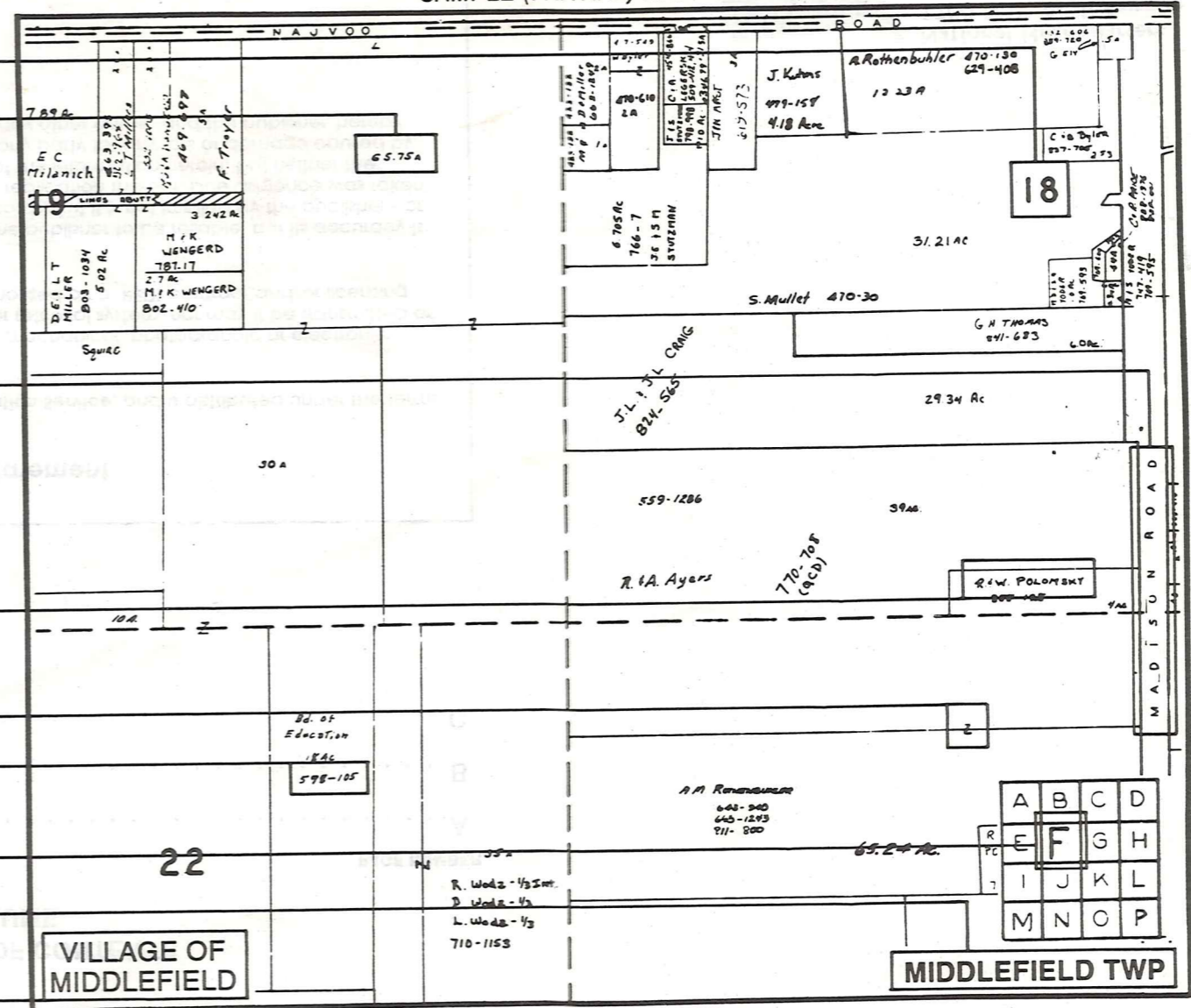
SAMPLE (PARTIAL) COUNTY INDEX MAP



SAMPLE (PARTIAL) MUNICIPALITY INDEX MAP



SAMPLE (PARTIAL) MAP PAGE



- Tract Lot Number
- Acreage
- Township Name
- Village Boundary
- Street Name
- Village Name
- Township Boundary
- Owners Name
- Denotes Continuous Ownership
- Deed Book & Page
- Map Page Number
- Township Name
- Village Name

- Village Boundary
- Street Name
- Village Name
- Township Name

USE OF THE MAP VOLUME

1. LOCATE THE GENERAL AREA OF INTEREST ON THE COUNTY INDEX MAP AND NOTE THE MUNICIPALITY NAME (TOWNSHIP OR VILLAGE).
 2. REFER TO THE TABLE OF CONTENTS AND NOTE THE BEGINNING ATLAS PAGE NUMBER FOR THE MUNICIPALITY OF INTEREST.
 3. TURN TO THE PAGE INDICATED, ON THIS PAGE WILL APPEAR AN INDEX MAP FOR THAT MUNICIPALITY.
 4. LOCATE THE GENERAL AREA OF INTEREST AND NOTE THE MAP PAGE NUMBER. THIS MAY BE EITHER A LETTER OR A NUMBER.
 5. MAP PAGES ARE IN ALPHABETICAL (OR NUMERICAL) SEQUENCE FOLLOWING THE MUNICIPALITY INDEX MAP. FOLLOW SEQUENCE TO THE MAP PAGE INDICATED.
 6. LOCATE SPECIFIC PARCEL OF INTEREST AND NOTE THE DESIRED INFORMATION.
- NOTE: ON SOME MAPS YOU MAY BE REFERRED TO A DETAIL SHEET SHOWING AN ENLARGEMENT OF THE AREA. THESE MAPS ARE FOUND AT THE END OF THE REGULAR MAP PAGES IN EACH MUNICIPALITY IN EITHER ALPHABETICAL OR NUMERICAL SEQUENCE.
- NOTE: CHARDON VILLAGE HAS TITLE SHEETS. TO LOCATE OWNERS NAME, NOTE THE PARCEL NUMBER, REFER TO THE TITLE PAGE FOLLOWING THE MAP OF INTEREST, FOLLOW NUMERICAL SEQUENCE TO THE PARCEL NUMBER OF INTEREST AND NOTE THE DESIRED INFORMATION. IN ALL OTHER MUNICIPALITIES THE OWNERS NAME APPEARS ON THE MAP PAGE.